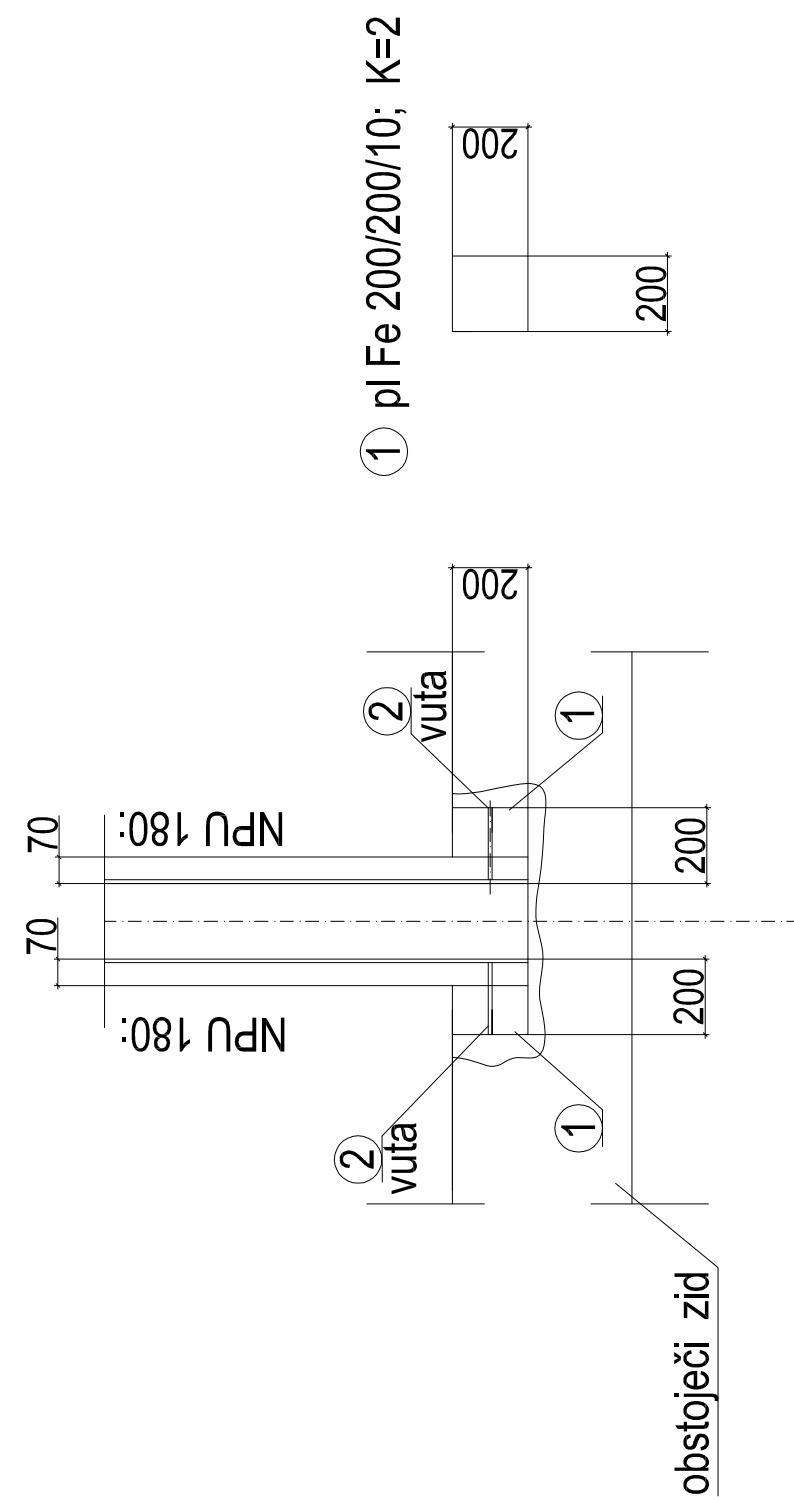
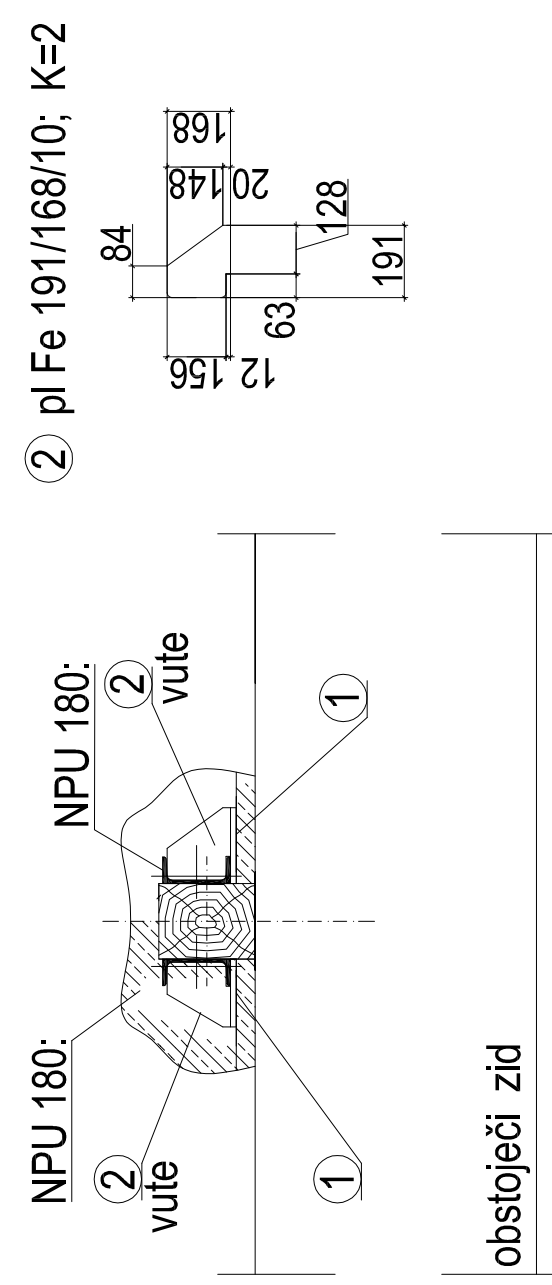


LEŽIŠČE NOSILCA NPU 180  
NA OBODNI STENI

TLORIS:

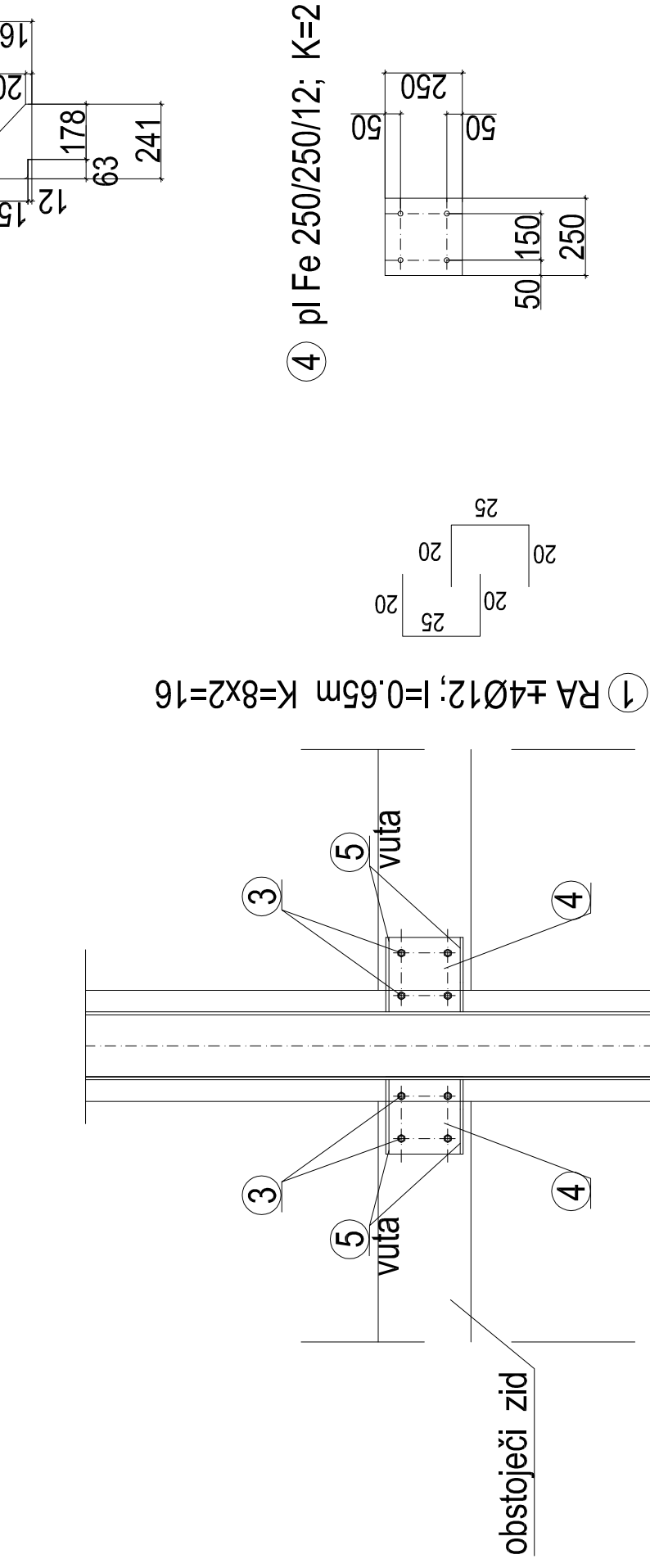


**PREZ:**

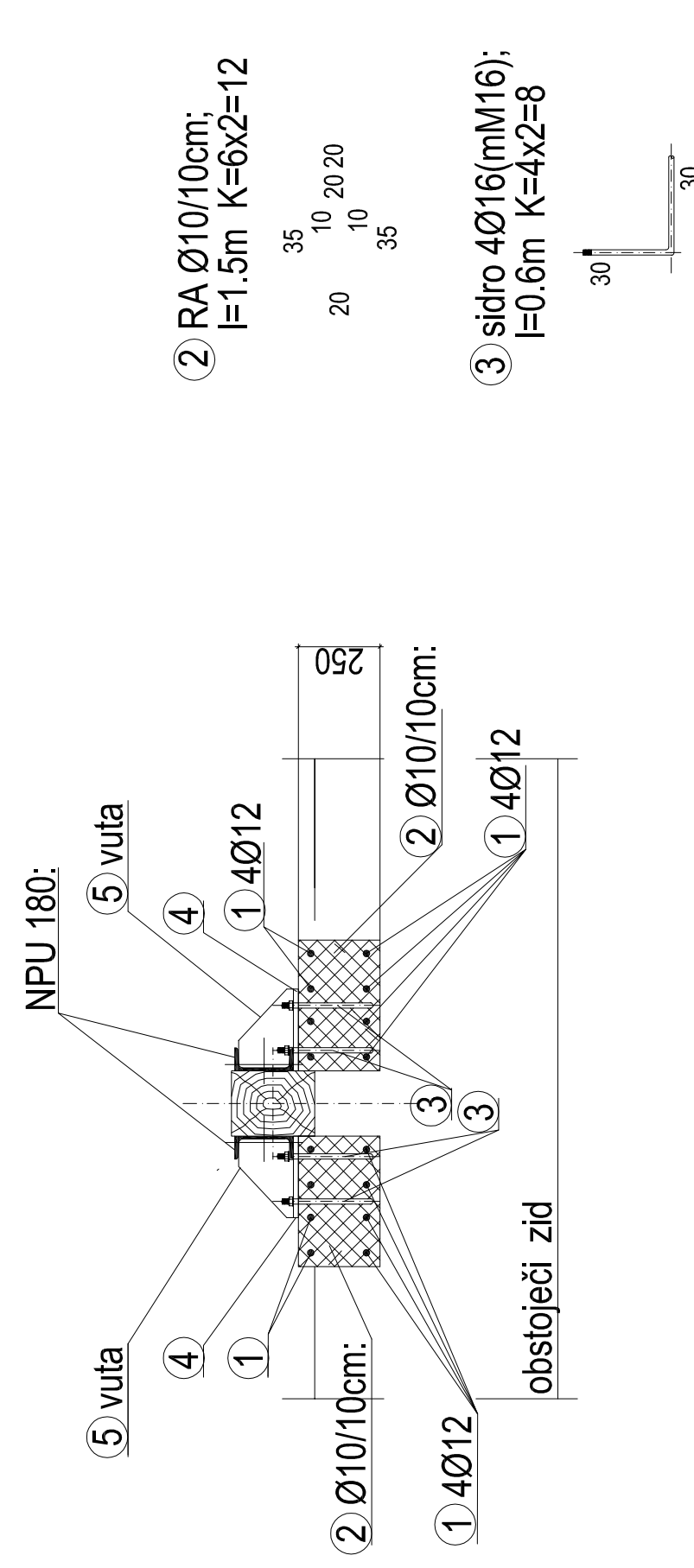


# LEŽIŠČE NOSILCA NPU 180 NA VMESNI STENI

TLORIS:

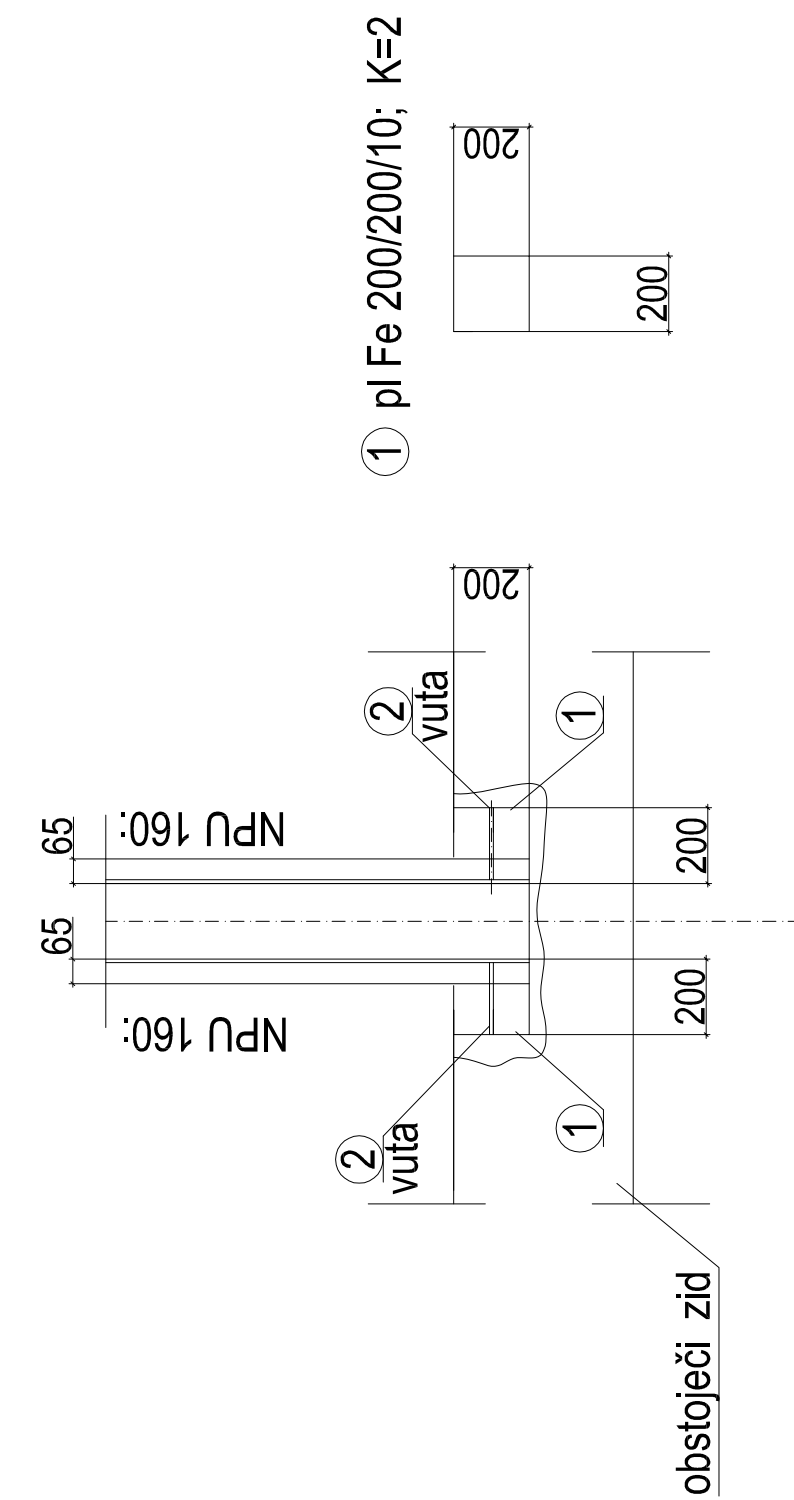


PREPAREZ:

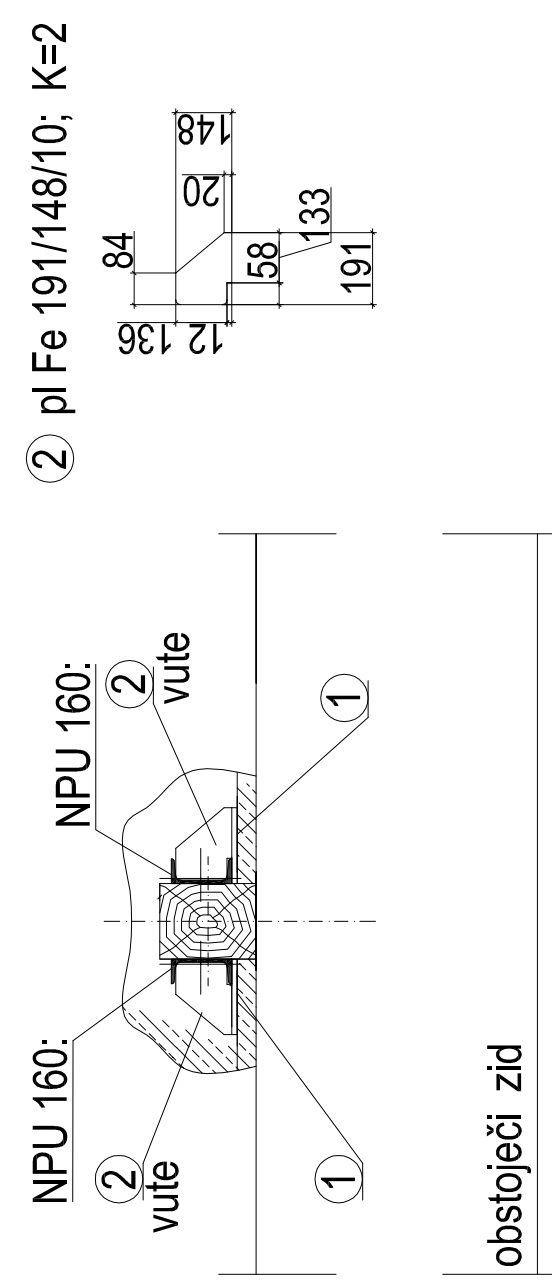


LEŽIŠČE NOSILCA NPU 160  
NA OBODNI STENI

TLORIS:

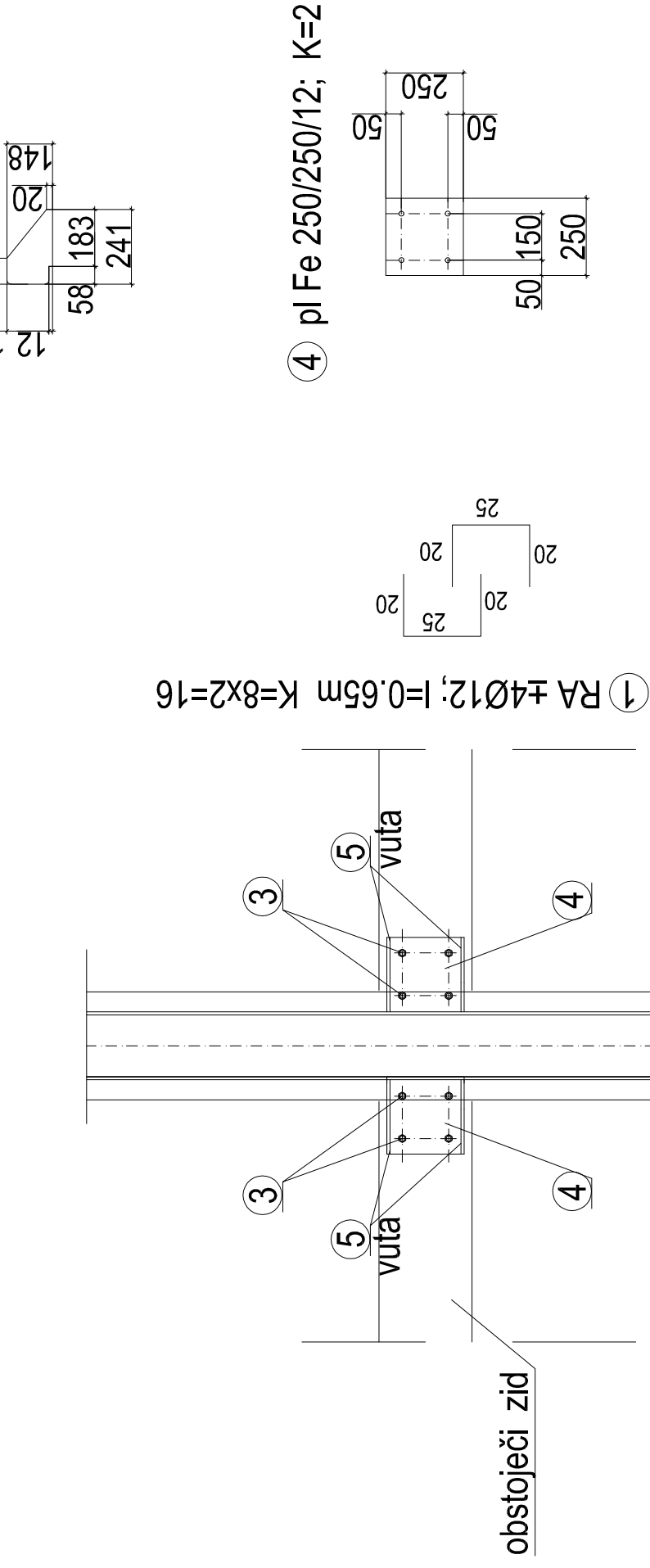


**PREZ:**

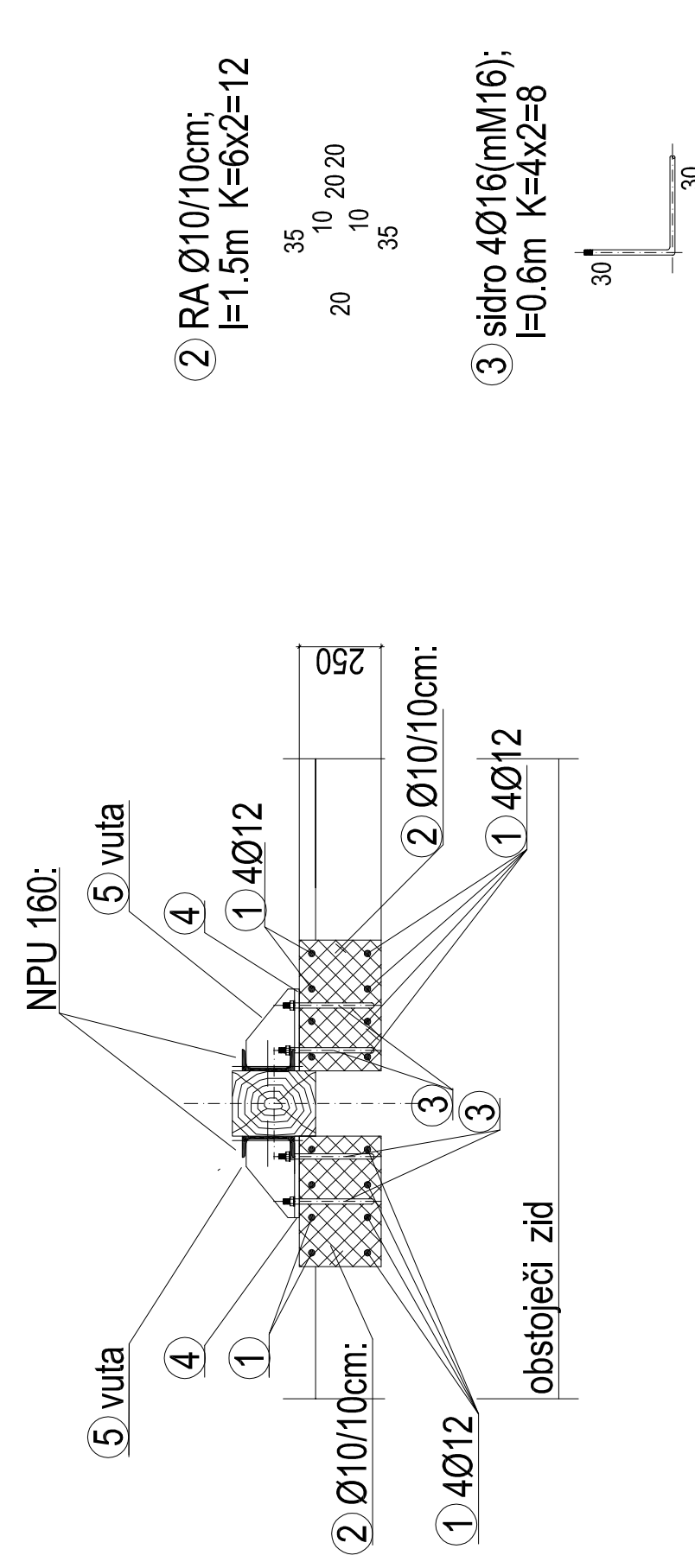


# LEŽIŠČE NOSILCA NPU 160 NA VMESNI STENI

**TLORIS:**



**PREPAREZ:**



- vse mere kontrolirati po načrtu arhitekture in preveriti na mestu samem

DETALJI SIDRANJA JEKLENE KONSTRUKCIJE  
J2, J3 - ojačitev lesene konstrukcije pod soho

[illegible]